

Dear Märklin Digital User,

A further development of the process for updates has been introduced for the Central Station 2 (item numbers 60213 to 60215) since the update to version 3.6.0. The following is information about how to go about doing updates under the new procedure.

The update can be done with a direct LAN connection from the Central Station 2 to a router connected to the Internet. This is the simplest, easiest, and most current solution. If you do not have a direct Internet connection, you can also copy the appropriate data from the Märklin web page at

<http://www.maerklin.de/de/service/downloads/software-updates/>

onto a USB stick. USB sticks for this purpose are available in computer specialty stores. Below is a description of this method of updates using a USB stick.

One of the characteristics of the Central Station 2 most appreciated by our customers is the updates offered on a continuous basis that can be used to install supplements and additional possibilities in a device. Before Software Version 3.6. this update ran without explanation and without the potential for the customer to make adjustments. This procedure for updates has been completely changed since Version 3.6. and has been combined with a clearly laid out menu guide. You can check which software version your device has by going to the menu "Setup" and the submenu "Version".

Step 1:

For this update, you need a USB stick with a memory capacity of at least 1 GB and a maximum size of 8 GB. Tip: For the sake of safety, copy and store any existing data in advance on an appropriate device (ex. PC).

Load the following files from the Märklin Web page under

http://www.maerklin.de/de/produkte/tools_downloads/software_updates.html

and store them in the main registry on this USB stick:

cs2update.md5

cs2update.img

Tip: Plug the USB stick for this transfer into a free USB port on your PC that is connected to the Internet. Go to the Web page mentioned above. Position the cursor on the desired file and right click. A selection menu will open up in which you can select the submenu item "Save target as...". In the new "Save" window which now opens up, select the USB stick as the save location and confirm this selection. Carry out this procedure for both files one after the other.

Step 2:

Now plug the USB stick into the USB port of the Central Station 2 that is ready for operation.

Only for owners of a CS 2 with software Versions before 3.6.:

Change to the menu "Setup" there and click on the button "Update Program". After the update, the Central Station will start again and then activate the new update procedure.

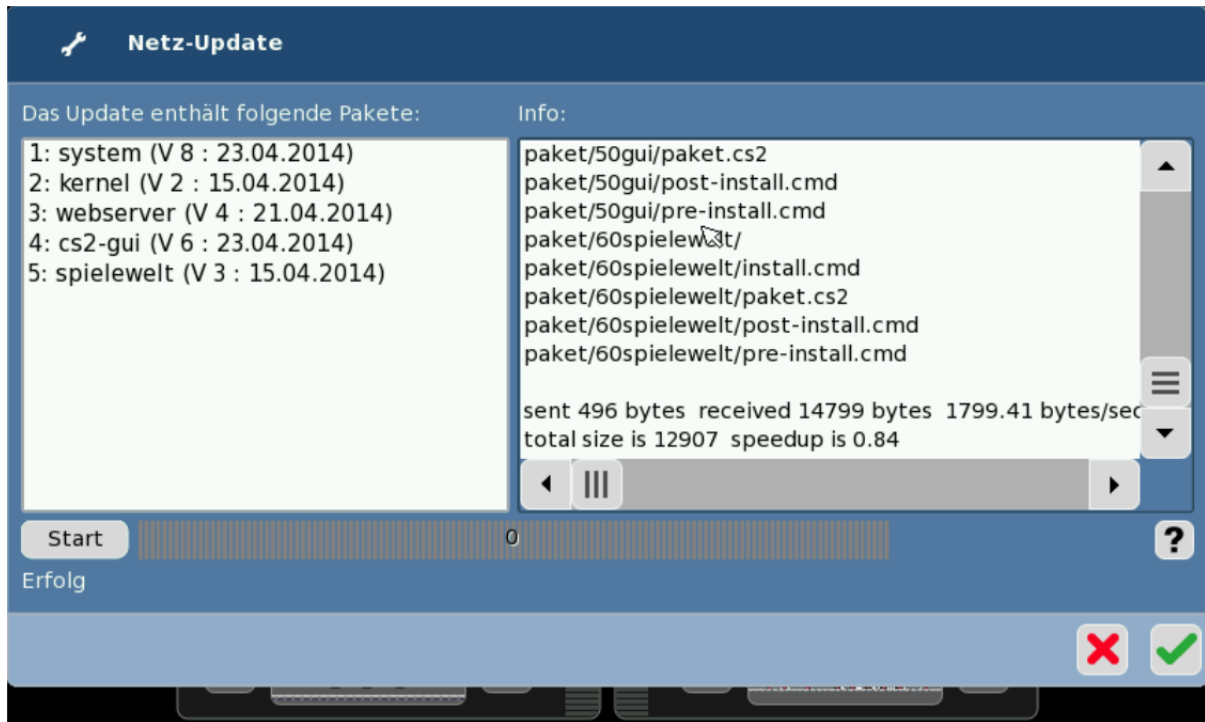
Step 3:

In the following step, the new update procedure is already being used. The menu item "Setup" looks as follows:



Under "Update", you can now select whether the update is to be done with the USB stick or with the network. Users of the USB stick now select at this point the button icon "USB stick".

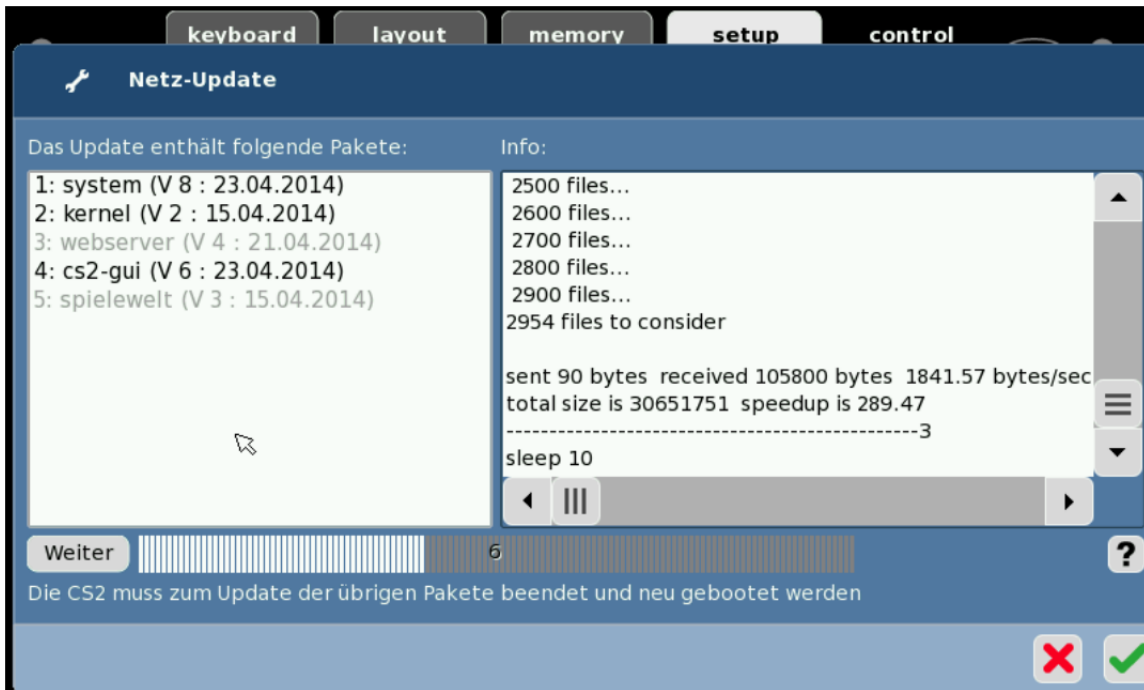
Both ways will open up a new display from which you can see which new update packets are available. If desired, you can have additional information displayed for each packet.



Step 4:

The update is now initiated by clicking on the button "Start". Different information about the status of the update will appear during the update. It is not possible to transfer only part of a packet.

Please note that this update can take a long time (up to 1 hour). Do not interrupt this process. Under no circumstances should you turn off the power to the Central Station. Otherwise, the system may enter a state from which the user can no longer activate it (the system).



Step 5:

After a successful update, click only (!) on the button icon "Continue" ("Weiter"). If instead the **X** or the check mark is activated, the update will not have been installed completely. If you try to do a new update, the program will continue from this point. Only if you activate "Continue" will the changes be transferred and will they be available after starting the Central Station again.

A successful update is shown in two ways. One way the previous new update packets are now shown only in gray instead of in black in the overview. In addition, you will read, "Your system is current" in the upper status line.



Note: There are sub-items that are not changed with each update. An example is the sub-item used by the system to check whether new images are available from the user (not from the update itself). If these items remain shown in black, this is not an error. The update itself was still successful.

Tip: You can check afterwards in Setup under "Version" which new version number is on your device. Under "Info" you can see which new "track format processor" (GFP) is loaded on the device. The track format processor is the software that is responsible for generating the digital signal on the track. This software is also used on the 60174 and 60175 Boosters.